

COLEMAN INDUSTRIAL CONSTRUCTION

NEWS

JUNE 1980

PERSONNEL PROFILE

RON SCHALK- ESTIMATOR PLUS

Ron Schalk has recently joined Col-Ind-Con as an estimator. Ron is a young man with considerable construction experience who learned the business "from the ground up".

Working as a laborer during summers while in high school and college gave Ron the practical experience an estimator benefits from. After attending Bradley U. with a major in construction Ron was given an unusual opportunity. He helped form a new company, Ohlendorf Builders, which grew rapidly and became quite profitable. Ron spent four years there, holding such responsibilities as estimating, administration and supervision of industrial and commercial projects of all sizes.



A native of Bloomington, Illinois, Ron has traveled extensively in various parts of the world.

We are pleased to have a person with Ron's experience and capabilities with our firm. His objectives and approach to the construction industry are well-matched to Col-Ind-Con - forward-thinking, management-oriented, and able to grow in the many and varied dimensions of industrial construction.

ECONOMICS NOTEBOOK

By Don Coleman

CONSTRUCTION A GOOD BUY

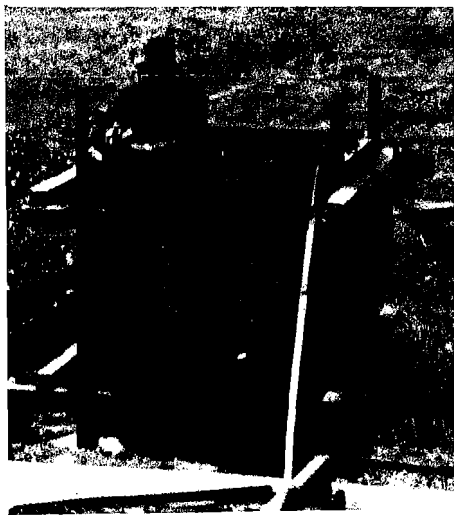
Our present national economic condition has a silver lining.

A recent market survey shows that the aggregate cost of construction materials has declined since April. The most conspicuous price declines have been in copper and lumber. Also, the Engineering News Record Building Cost Index showed a monthly decline as of May 15th. Due to the recent slowdown, there now exists a 10% surplus of experienced construction workers. Alert owners will pick up these positive signs that indicate bargains can be had in the purchase of new plants and facilities.

Many of our subcontractors are bidding for their portions of contracts at very low margins. With the prime interest rate rapidly retreating and money becoming more available, projects that looked out of reach several months ago now are feasible.

We at Col-Ind-Con are always anxious to show you the savings that can be had in both new construction and plant modification. Every penny that we can save on cost we pass on directly to our customers. Since forming our business in August, 1979 we have saved our customers \$231,745 on their projects.

Call us to see how much we can save you on the work you have been hesitating on because of escalating costs.



Steve Farver inspects Water Tower Leg Foundation Forms at Mountain Grove, Missouri on subcontract for Brown Steel Co. of Noonan, Ga.

MODERN PLANTS- VITAL TO ECONOMY

Plant renovation and replacement is a key to the economic progress of a country. Consider this when comparing the U.S. to Japan: In the U.S. a factory is replaced on the average of every 31 years; in Japan, the average replacement time is every 13 years. Working with obsolete equipment in outmoded plants is unhealthy for people as well as our economy.

HAZARDOUS WASTE PRE-TREATMENT PLANTS ARE A NATURAL FOR COL-IND-CON

MISSOURI HAZARDOUS WASTE
MANAGEMENT LAW TO BE
IMPLEMENTED ON JULY 1st.

The state of Missouri has a law concerning pre-treatment of hazardous wastes which will start being implemented July 1, 1980. Most of the effected persons, cities and companies have been notified by now.

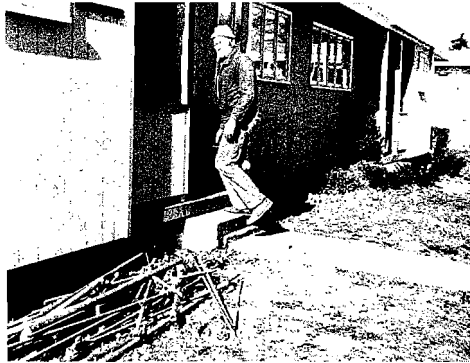
This law requires that hazardous wastes be pre-treated and manifested before being dumped into city sewerage systems and landfills.

Those who must comply are generators, transporters, storers, treaters, and disposers of hazardous wastes. These wastes include reactive, ignitable, corrosive, toxic and other wastes resulting from processes which generate hazardous wastes.

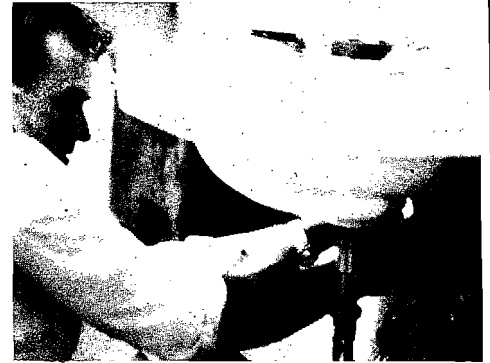
Col-Ind-Con has the know-how to build pre-treatment plants at very competitive costs. Key people have been involved in construction of pollution control facilities for many years. We can help with preliminary estimates and planning. Our crews are highly productive with experienced field personnel able to install quality structures on time, with minimal direction according to specs and budget.

Call us to discuss any pre-treatment facilities your company may be considering building.

REPLACEMENT OF ARMY RESIDENCE PLUMBING AT FORT LEAVENWORTH DONE ON TIME, ON THE MONEY IN TIGHT SCHEDULE. We recently completed installation of new copper plumbing in 192 duplex units in 120 calendar days. Residents were pleased with our crews and the minimal inconvenience caused.

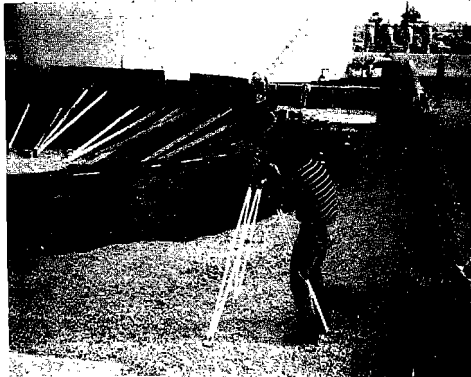


Sam Davis removes rusted, leaky piping from duplex at Oregon Village.

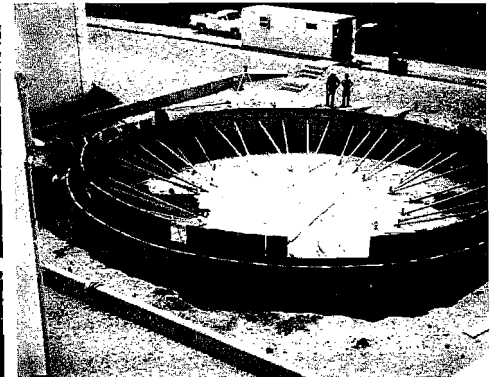


Jr. Carr replaces plumbing with a more lasting, rust-proof copper system.

OIL TANK FOUNDATION INSTALLED AT KCI AIRPORT FOR ALLIED INTERNATIONAL SYSTEMS AND PITTSBURG-DES MOINES STEEL

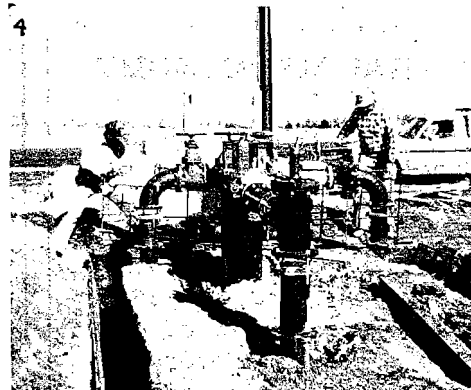


Bob Lansdowne checking form grade for foundation.

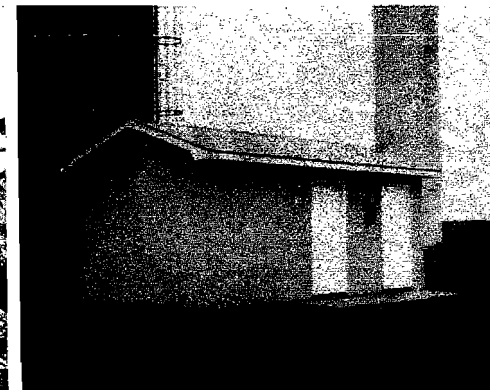


Aerial view of foundation.

WATER STORAGE PUMP STATION BUILT FOR MITCHELL COUNTY, KANSAS



Steve Farver and Bill Swain install foundations around the pump system for the pump station.



Mitchell County Water District #3 of Scottsville, Ks. contracted with us to build this pump station.

COL·IND·CON

P. O. BOX 14097 · KANSAS CITY, MISSOURI 64152 · 816 · 741-8383