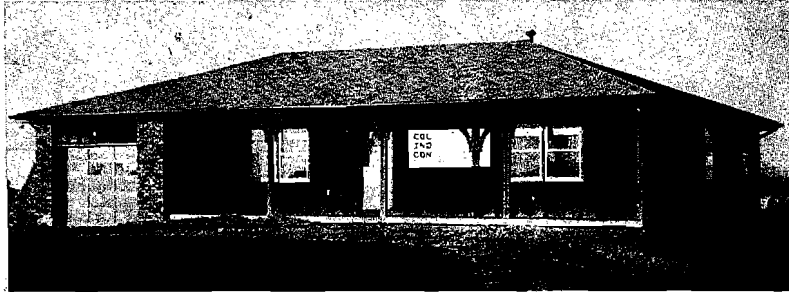


COLEMAN INDUSTRIAL CONSTRUCTION

NEWS

FEBRUARY 1980



GET A GLIMPSE OF OUR OFFICE

Col-Ind-Con office is easy to find at 5604 River Park Drive in Riverside, Mo. River Park Drive is also known as Highway 9 and is located between the Broadway Bridge and Parkville, Mo. It is easily accessible from I-29 or I-635. We are just west of Sutherland Lumber. Stop in and visit us soon.

PERSONNEL PROFILE

WAYNE LINGO BRINGS INDUSTRIAL EXPERIENCE TO JOB AS FIELD SUPERINTENDENT

Much of the work Wayne Lingo has done until joining Col-Ind-Con has taken him to many parts of the country.

Previously with Daniel International Construction, Wayne had worked his way up from carpenter to area superintendent, and has been responsible for as many as 130 men at once. Projects he has been involved include building warehouses, industrial shipping, chemical and pulper buildings. Another job Wayne has experience in is metal fabrication. Although the majority of his background is in concrete and carpentry, Wayne has handled everything from drafting and take-off to field supervision and coordination.



The extensive field background Wayne Lingo brings to Col-Ind-Con enables us to better serve our customers. We can provide concrete installations quickly and accurately with a minimum of direction due to Wayne's ability to set up, supervise and complete a job.

Wayne, his wife Carol and two daughters make their home in Batesville, Ark. Besides his construction experience, Wayne has served in the USAF as a radar operator and also attended Orange Coast Jr. College in Costa Mesa, Calif.

ECONOMICS NOTEBOOK

By Don Coleman

COLUMN ON ECONOMICS APPEARS AS REGULAR NEWSLETTER FEATURE

The American free enterprise, capital-based market system is unique in the world. The profit factor allocates manpower, resources and financial assets more efficiently than any other system.

Keeping the system viable through popular knowledge of its workings is vital to our American way of life. To that end, each Coleman Industrial Construction News will feature a brief economic item under a column headed "Economics Notebook".

Here's our first column:

RAW NUMBERS CAN MAKE THE SAME THING LOOK DIFFERENT

The following item was taken from Fortune magazine, 12/3/79 and related to the recent drop in profits in the auto industry.

"Ford reported a third-quarter profit decline of about \$200 million, G.M. of about \$500 million. In percentage terms, Ford's profits were off 66%, G.M.'s 96%. Given the view of profits that prevails in U.S. barrooms, those figures have to qualify as public-relations triumphs.

While G.M.'s third-quarter profit decline, from \$527.9 million to \$21.4 million worked out to 96%, a recovery back to \$527.9 million would result in headlines next October about a profit increase of 2,367 percent. We shudder to think of the punishments that would be proposed in the Oval Office."

**COL·IND·CON INITIATES
AFFIRMATIVE ACTION
PROGRAM**

In order to implement an affirmative action program, Col-Ind-Con has been quite successful at finding and awarding work to area minority contractors.

At the USDB Prison Farm at Fort Leavenwoth, Kansas, Col-Ind-Con subbed work to Clifford Maddox Construction Co. They built a reinforced concrete screening basin.

At Amoco Oil Refinery in Sugar Creek, Mo., Kelley Brothers Asphalt Works laid 1500 tons of asphalt for truck ramps.

Various jobs have been performed by Eberra Plumbing.

We would appreciate any referrals of good minority contractors to help implement our program.



Wayne Lingo inspecting formwork.

WATER TANK FOUNDATION
AT WARSAW, MISSOURI, COL-IND-CON BUILT A WATER TANK FOUNDATION. PITTSBURG-DES MOINES STEEL CO. WAS THE GENERAL CONTRACTOR.



Jim McMillan tying re-bar.

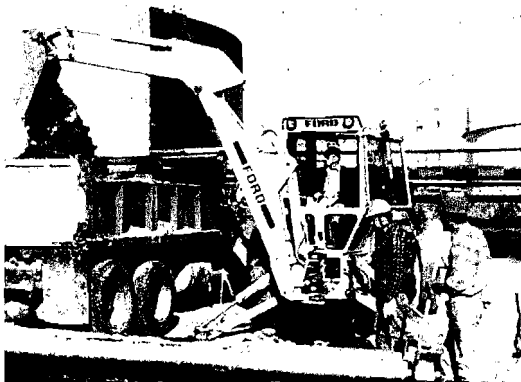
**MILD WEATHER
A BOON TO OUR
WINTER WORK**

ASPHALT CONTAINMENT DIKE

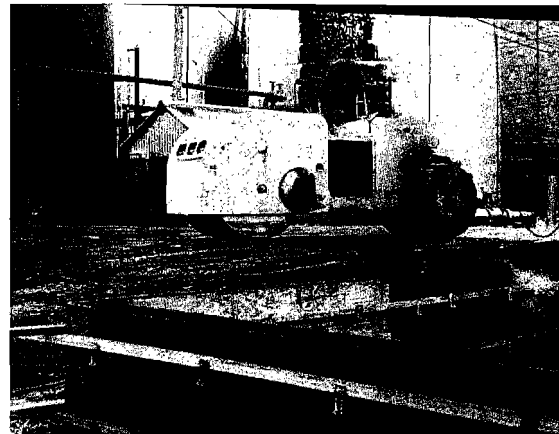
COL-IND-CON RECENTLY CONSTRUCTED AN ASPHALT CONTAINMENT DIKE AT AMOCO OIL REFINERY IN SUGAR CREEK, MISSOURI.



Lee Allen, project supervisor, checks grades.



Floyd Auxler (center) of Lee Grover Construction, sub-contractor to Col-Ind-Con, supervises excavation for wall. Note tight working conditions.



Kelley Brothers Asphalt works finishing asphalt and retaining wall formwork (foreground).

COL·IND·CON

P.O. BOX 14097 · KANSAS CITY, MISSOURI 64152 · 816 · 741-8383